

Manufacturer
Poly-Triplex® Technologies, Inc.

PO Box 398
Bonifay, Florida 32425
Phone: 850.547.9999
Fax: 850.547.9990
Email: info@poly-triplex.com
www.poly-triplex.com

Certified Installer



One hundred years of structural integrity...
a legacy of protection.

Rehabilitation of our infrastructure is vital...
and the resources appropriated must be used wisely.

For decades sewer utilities were forced to increase capacity in
wastewater treatment plants to accommodate the demand
created by population growth and ground water infiltration.

The U.S. Environmental Protection Agency (EPA) recently estimated
that our nation must spend more than \$300 billion over the next 20
years to rebuild our crumbling infrastructure.

In a world economy demanding
cost effective measures be taken
to insure an environmental
heritage for future generations,
the cheapest priced product does
not necessarily equate to the
better choice. Poly-Triplex® is
value engineered to be the most
cost effective long term solution
available today.



Working together we have the
power to make a difference.

Poly-Triplex® installation trucks are
designed to enable installations to
occur quickly and efficiently. Certified
Installer positions are available.

Water

Wastewater

Stormwater

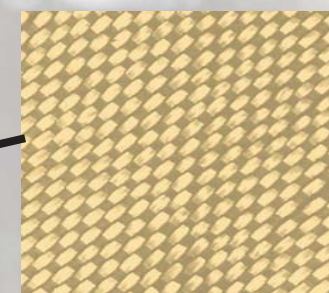
Industrial

Chemical

Environmental

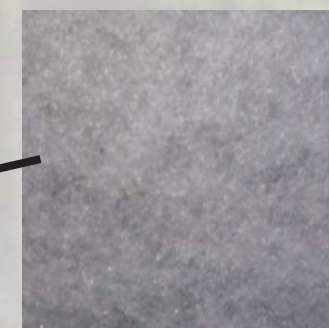
What makes Poly-Triplex® so much more effective and
permanent than other methods of rehabilitation?

Three Layers...Three Important Benefits



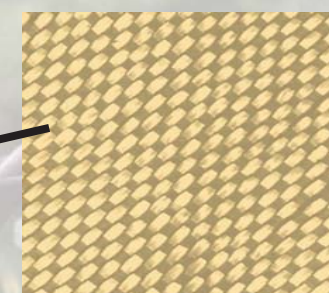
Layer 1 – Structural Fiberglass

Structural fiberglass and epoxy resins are bonded to the
existing structure and cured in place under pressure and
steam heat injection in a controlled atmosphere. Poly-
Triplex® systems use 100% Solids Epoxy. It will not shrink,
crack, peel or blister.



Layer 2 - Non-Porous Inner Membrane

This layer contains 3 critical components, one non-porous
membrane with felt fibers embedded on both sides,
enabling a mechanical bond between the membrane and
the fiberglass layers. This membrane layer is the most vital
part of the rehabilitation process, eliminating any pinholes,
thereby providing a permanent barrier to infiltration, ex-
filtration and gas penetration.



Layer 3 – Structural Fiberglass

Fiberglass and epoxy resin provide structural enhancement
and protect the non-porous inner membrane against
corrosive sewer gases, damage from sewer equipment, or
attack from sand, rocks and debris during sewer cleaning.

**POLY-TRIPLEX® LINER SYSTEM IS TIME-TESTED AND PROVEN WITH
AN UNPARALLELED TRACK RECORD OF SUCCESS IN THE
WASTEWATER ENVIRONMENT.**

- Industry Leading Warranty from the Manufacturer
- Thousands of Structures Lined for Longer than 10 Years

Poly-Triplex® Technologies is leading the industry in service and warranty.
Product quality and liner thickness is controlled at the manufacturing plant
rather than by a field applicator. It is cured in place at the jobsite in a controlled
atmosphere with pressurized air and steam heat injection. The Poly-Triplex®
Liner forms a monolithic structured composite, bonded to the host structure.
Poly-Triplex® has Engineering Certification for 100 year life service and is time-
tested and proven to work in real-life service.

Poly-Triplex® Liner Systems Work...

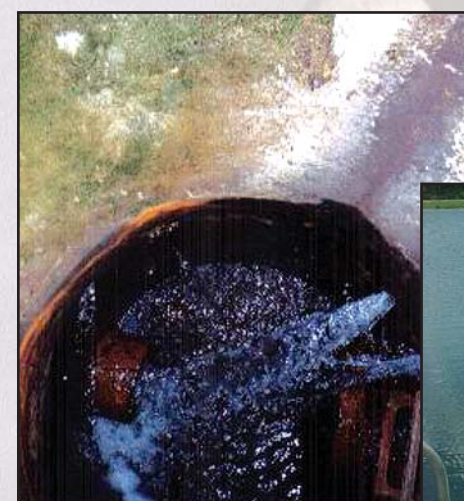


Pump Station with Severe Infiltration Located Next to Lake In Loveland, CO.



"Since its construction this Sewage Pump Station located on the edge of a lake had infiltration, which worsened to the point that there was more infiltration than wastewater being pumped out. After considering many options... the Poly-Triplex® system became the only feasible and economical solution to our problem. The undertaking of this difficult project showed the determination and experience to complete even the hardest of jobs and certainly demands the highest recognition for completion of a project like this."

Ed Russell, City of Loveland, CO



Infiltration Stopped in Lake Equalization Manhole



This lake equalization manhole had severe infiltration at the riser joints rendering the structure ineffective. The owner had tried several other methods of repair that did not work. The monolithic and structural Poly-Triplex® Liner System was installed in just a few hours and completely stopped the infiltration.

Manholes

Pump Stations

Wet Wells

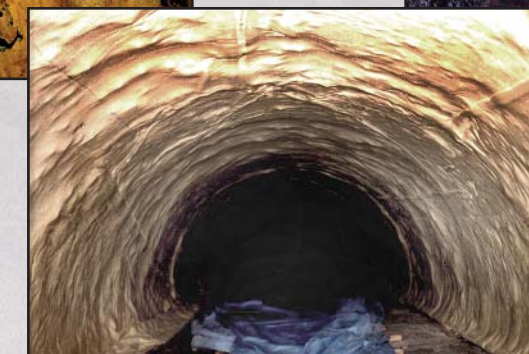
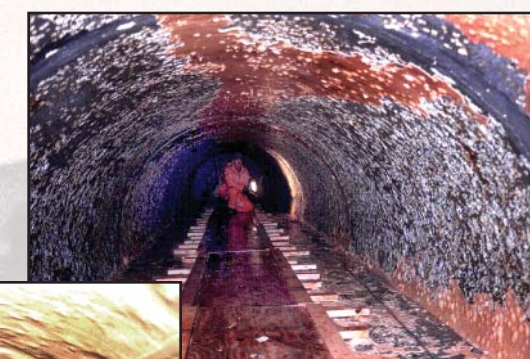
Culvert Pipe

Vaults

Tanks

Catch Basins

...and keep on working for decades.



Large Diameter Pipeline

This seven-foot diameter precast concrete pipeline was severely deteriorated. The Poly-Triplex® installer pressure cleaned the structure to remove the failed spray-on coating and any loose concrete. The structure was then lined with the PTL-6800 series liner, permanently and structurally rehabilitating the host pipe.

Corrugated Culvert Pipe

"It is a highly impressive application for severely degraded systems."

Matt Bell, P.E., Volkert & Associates, Inc., Foley, AL



This 30-inch oval, 116-foot long corrugated culvert pipe had extreme corrosion and was structurally failing. The Poly-Triplex® Liner was pulled through the structure and cured in place with air pressure and steam heat injection, saving the municipality many thousands of dollars in excavation costs.

Poly-Triplex® Technologies...
Making a difference for future generations.

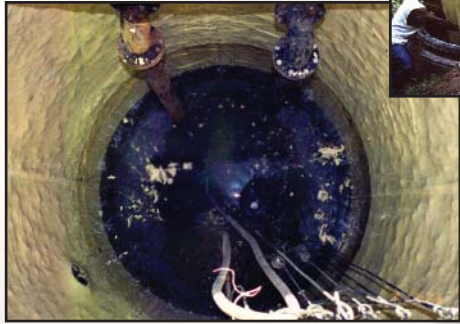


This sewage pump station has been pressure cleaned and prepared to receive the Poly-Triplex® liner. It was so badly deteriorated the rebar is exposed.



The liner is being lowered into the structure where it will be cured in place in a controlled atmosphere with the patented process of pressurized air and steam heat injection.

**Sewage
Pump
Stations**



The liner is cured in approximately 2 hours. Pumps are reinstalled and the station is back in service within 24 hours.



**Yellowstone National Park
receives Poly-Triplex®
Liner System**



**Poly-Triplex® Technologies is revolutionizing the way
environmental and utility problems are solved.**

The patented Poly-Triplex® Liner System uses the existing structure as a mold and enables installation to occur without excavation.

Since founded in 1990, Poly-Triplex® Technologies has focused solely on designing and developing economical and permanent systems for infrastructure repair and corrosion protection. Ninety-seven (97) U.S. patent claims are granted on the Poly-Triplex® product and its installation process.



H₂S gas was destroying this once smooth concrete surface.

After cleaning and lining, the structure is permanently rehabilitated. The remaining aggregate can be seen as the Poly-Triplex® Liner conforms to every indentation.

"We used Poly-Triplex® in a wet well deemed unfeasible for renovation by most professional engineers, which resulted in eliminating a 100,000 gallons per day infiltration problem that had plagued our city for many years."

Laurin Lowry, City of Hamilton, MT

"We experienced a sewer line collapse. Had the Poly-Triplex® not been installed in the manhole closest to the treatment plant, the entire manhole would have collapsed. Poly-Triplex® saved the town a major environmental disaster."

Ernie Schlagel, PWD, Town of Thermopolis, WY



"We are more than pleased with what Poly-Triplex® is doing for us. H₂S gases have not effected the Poly-Triplex® Liners."

Ted Smiley, City of Warrington, NC

This old brick manhole was crumbling due to H₂S gas deterioration and severe infiltration.

In less than 4 hours, the Poly-Triplex® Liner System was installed, providing this structure protection from possible further collapse. No further infiltration will occur, and no further deterioration will occur.



Copyright 2002. All rights reserved.